



**Embedded Point Cloud  
Engines**

**TOUCH &  
AUTOMATE**  
Beyond INDUSTRIE 4.0

# 3D Robot Vision for Bin Picking IntelliPICK3D-PRO



**Next Performance Level  
- Ultra Fast -**

**ISRA**  
VISION

# Reliable 3D Bin Picking Made

## Highest Efficiency

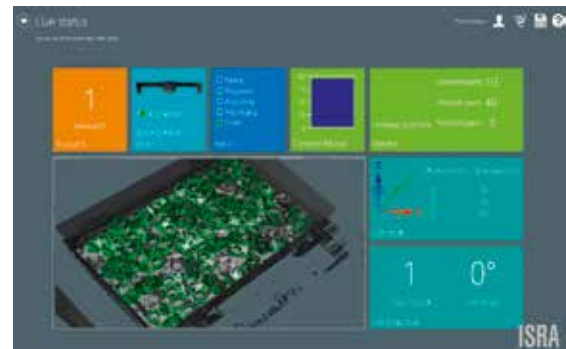
- Return on investment in less than a year for typical applications
- Maximum productivity through a scanning time of a few seconds
- Shortest cycle time and highest system availability
- Double speed with integrated robot path planning

## Maximum Robustness

- Automated sensor and robot calibration
- Robust capturing and collision free grabbing of complex part geometries
- Increased output with standard, heavy and bulky parts
- Intelligent pick and place with integrated collision check
- Robust 3D object detection at every depth



# IntelliPICK3D-PRO



Stereo Scan with Multiline Illumination



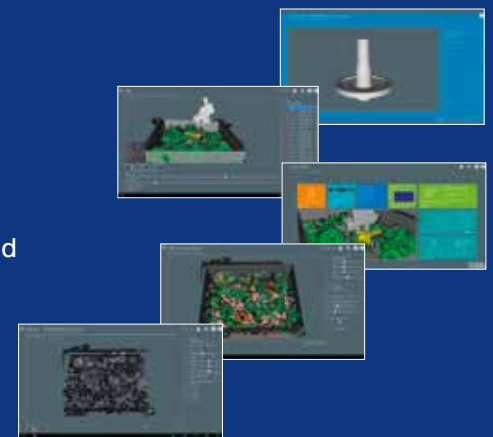
Detection of Parts in the 3D Point Cloud

## Technology and Performance

### Easy-to-use with intuitive GUI

Only a few steps to the finished application. Intuitive parametrization at the factory floor in modern design based on new GUI.

- Guided workflow navigation
- Simple and intuitive setup
- Intelligent image processing tools
- Integrated plausibility checks
- Efficient processing of 3D point cloud
- Standard communication interface for all common robots
- Embedded PC for faster processing
- Wireless LAN embedded
- Industrie 4.0 OPC-UA



# Easy with IntelliPICK3D-PRO

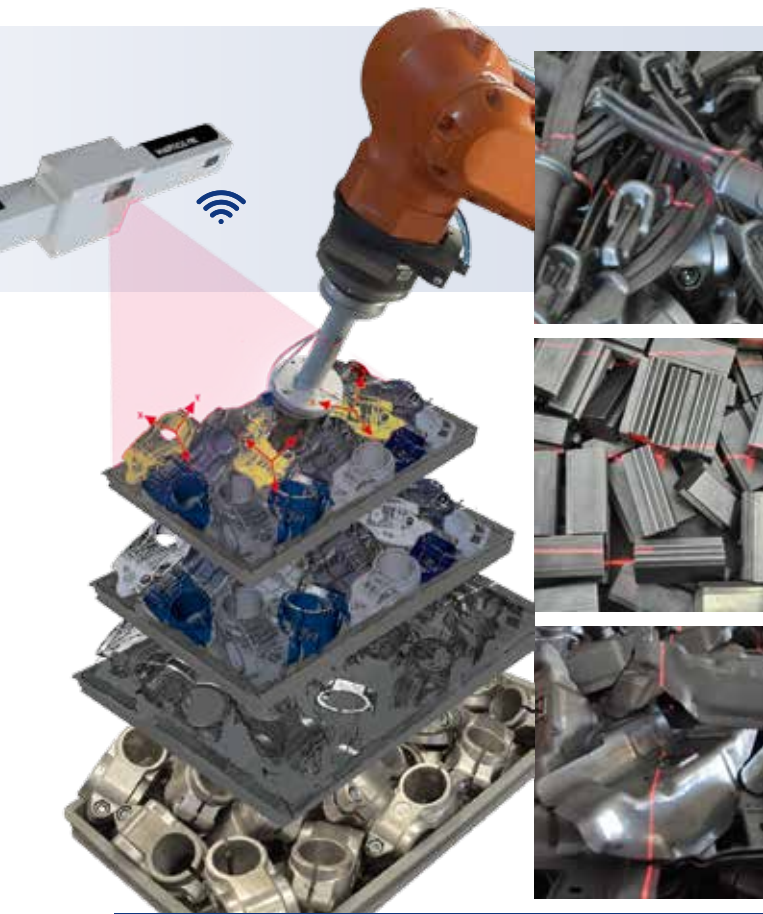
**Next Level**

## Best Flexibility

- Infinite variety of objects using 3D CAD data teaching
- Applicable for one or more containers
- Integration of new parts within minutes
- Flexible mounting system
- Multiple use: Applicable in many different industries
- Automatic container detection for highest availability

## The Future of Automated Production – Now!

- No expert knowledge needed - integrate and start operation: Parameterizing instead of programming
- Easiest setup and installation, due to CAD based recognition
- Save time with pre-calibrated sensors
- Standardized components with low maintenance effort



**• Embedded Sensor  
• Faster  
• Higher Accuracy**

## Advanced Technology

- Higher speed and accuracy, better resolution through embedded cameras
- Largest field of view
- Direct connection to the robot
- Best robustness even on non-cooperative parts by advanced multi laser line projection
- Compatible models to existing product line
- Industry 4.0 highlights: OPC-UA and WLAN on-board
- Reduced system components with embedded PC

**Collision-Free Robot Guidance for Picking**

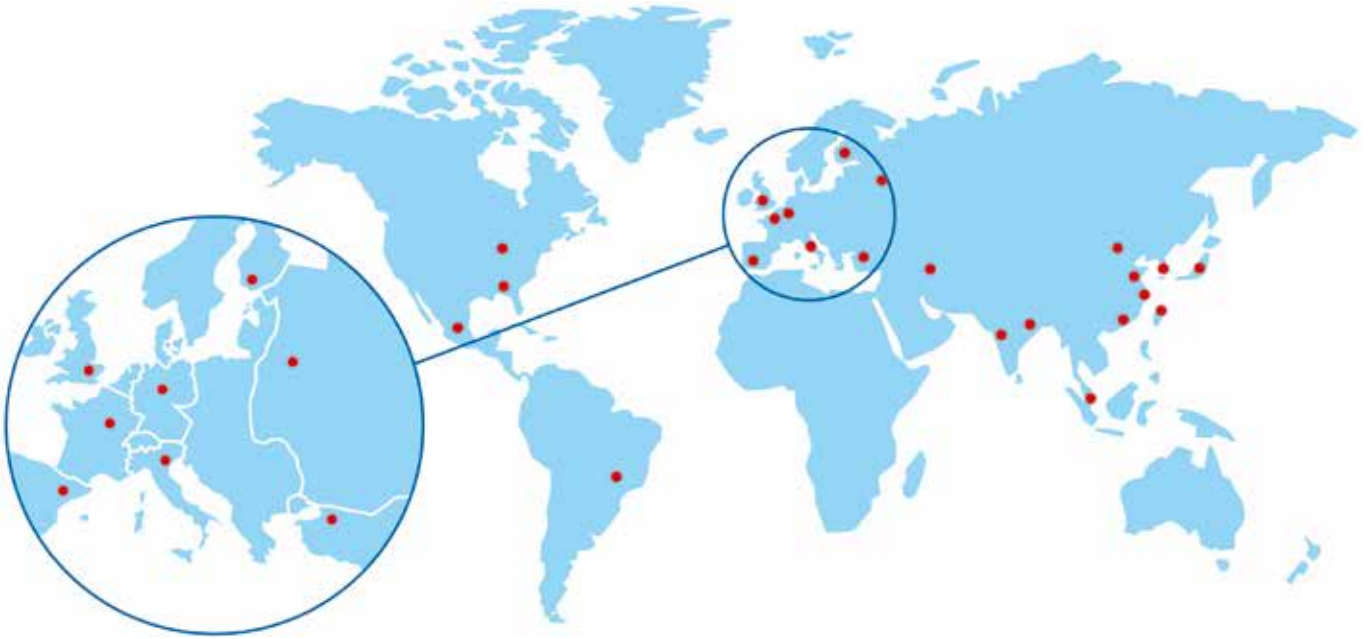
**Great Price, Outstanding Product**

## Features

- Plug & Automate: Ready to use in HOURS with ANY ROBOT
- Fast and Robust 3D scan and detection in seconds
- Collision free robot path and gripper planning
- Robust 3D object detection of small and shiny parts
- Picking of several parts with only one scan
- Accuracy within millimeter range



# Innovation for Robot Automation



## Automation at its best

ISRA VISION has been a leading supplier of high-performance quality inspection, robot guidance and production logistics systems for more than 30 years.

Our systems are used around the world in many different industries and applications. Our mission is to offer a comprehensive portfolio of standard solutions, covering all requirements along the process chain.

ISRA's experience and technological competence in the field of industrial image processing has been proven by thousands of successfully installed systems worldwide.

## Benefits at a glance

Customers opt for ISRA's solutions for the following reasons:

- Our development activities are consistently aligned with our customers' requirements.
- We are continuously expanding our knowledge and expertise in all core areas of industrial image processing.
- Our customer relationships do not end with the delivery of new products. The Customer Support Center provides comprehensive support for the use of your systems and helps you to increase your productivity – be it via our telephone hotline, remote service, on-site service, or our maintenance services.
- More than 800 employees at our sites in Europe, North and South America, and Asia are committed to your success.

## ISRA VISION

Germany  
Tel.: +49 (6151) 948 0  
Fax: +49 (6151) 948 140

UK  
Tel.: +44 (1322) 520 410  
Fax: +44 (1322) 559 419

Turkey  
Tel.: +90 (212) 285 97 45  
Fax: +90 (212) 285 97 43

Iran  
Tel.: +98 (21) 226 467 02  
Fax: +98 (21) 226 467 04

Spain  
Tel.: +34 (93) 589 71 79  
Fax: +34 (93) 589 71 79

Italy  
Tel.: +39 (0464) 490 603  
Fax: +39 (0464) 498 875

France  
Tel.: +33 (0) 155 681 250  
Fax: +33 (0) 155 681 000

Belgium  
Tel.: +32 (2) 652 38 66  
Fax: +32 (2) 652 37 28

Russia  
Tel.: +7 (499) 418 00 32  
Fax: +7 (499) 418 01 36

USA  
Tel.: +1 (248) 499 64 68  
Fax: +1 (248) 499 64 63

Brazil  
Tel.: +55 (11) 3476 11 32  
Fax: +55 (11) 3476 11 32

P.R. China  
Tel.: +86 (21) 689 162 86 0  
Fax: +86 (21) 689 162 86 888

Korea  
Tel.: +82 (31) 8069-7300  
Fax: +82 (31) 8069-7303

India  
Tel.: +91 (20) 267 410 00  
Fax: +49 (6151) 948 140

Japan  
Tel.: +81 (3) 671 214 40  
Fax: +81 (3) 671 214 41

Taiwan (R.O.C.)  
Tel.: +886 (3) 250 01 48  
Fax: +886 (3) 250 01 49

Optimize your ROI with the technology leader **ISRA**

[www.isravision.com](http://www.isravision.com)